

测试报告

No. CANEC2124938418

日期: 2022年01月07日 第1页,共4页

广东佳景科技股份有限公司
广东省东莞市寮步镇石步敬业路9号

以下测试之样品是由申请者所提供及确认: 水性光油(混合物)

SGS工作编号: CP21-069443 - SZ
客户参考信息: 配方主要成份如下, 混合组成:
(1) 水性光油; (2) 水性哑光油;
(3) 铝箔清漆; (4) 底胶; (5) 浸染液;
(6) 触感油。
样品接收日期: 2021年12月31日
测试周期: 2021年12月31日 - 2022年01月07日
测试要求: 根据客户要求测试
测试方法: 请参见下一页
测试结果: 请参见下一页

通标标准技术服务有限公司广州分公司
授权签名

Coral Qiu 邱蔚珊
批准签署人

scan to see the report



5C81D3D1



SGS-CSTC Standards Technical Services Co., Ltd.
Guangzhou Branch Testing Center Chemical Laboratory

Unless otherwise agreed in writing, this document is issued by the Company subject to its General Conditions of Service printed overleaf, available on request or accessible at <http://www.sgs.com/en/Terms-and-Conditions.aspx> and, for electronic format documents, subject to Terms and Conditions for Electronic Documents at <http://www.sgs.com/en/Terms-and-Conditions/Terms-e-Documents.aspx>. Attention is drawn to the limitation of liability, indemnification and jurisdiction issues defined therein. Any holder of this document is advised that information contained hereon reflects the Company's findings at the time of its intervention only and within the limits of Client's instructions, if any. The Company's sole responsibility is to its Client and this document does not exonerate parties to a transaction from exercising all their rights and obligations under the transaction documents. This document cannot be reproduced except in full, without prior written approval of the Company. Any unauthorized alteration, forgery or falsification of the content or appearance of this document is unlawful and offenders may be prosecuted to the fullest extent of the law. Unless otherwise stated the results shown in this test report refer only to the sample(s) tested.

Attention: To check the authenticity of testing / inspection report & certificate, please contact us at telephone: (86-755) 8307 1443, or email: CN.Doccheck@sgs.com

198 Kazhu Road, Sciencetech Park Guangzhou Economic & Technology Development District, Guangzhou, China 510663

中国·广州·经济技术开发区科学城科珠路198号 邮编: 510663

t (86-20) 82155555 www.sgs.com

t (86-20) 82155555 sgs.china@sgs.com

测试报告

No. CANEC2124938418

日期: 2022年01月07日 第2页,共4页

测试结果:

测试样品描述:

样品编号	SGS样品ID	描述
SN1	CAN21-249384.003	白色液体

备注:

- (1) 1 mg/kg = 1 ppm = 0.0001%
- (2) MDL = 方法检测限
- (3) ND = 未检出 (< MDL)
- (4) "-" = 未规定

卤素

测试方法: 参考EN 14582:2016, 用 IC分析。

测试项目	单位	MDL	003
氟 (F)	mg/kg	50	ND
氯 (Cl)	mg/kg	50	ND
溴 (Br)	mg/kg	50	ND
碘 (I)	mg/kg	50	ND

除非另有说明, 此报告结果仅对测试的样品负责。本报告未经本公司书面许可, 不可部分复制。检测报告仅用于客户科研、教学、内部质量控制、产品研发等目的, 仅供内部参考。

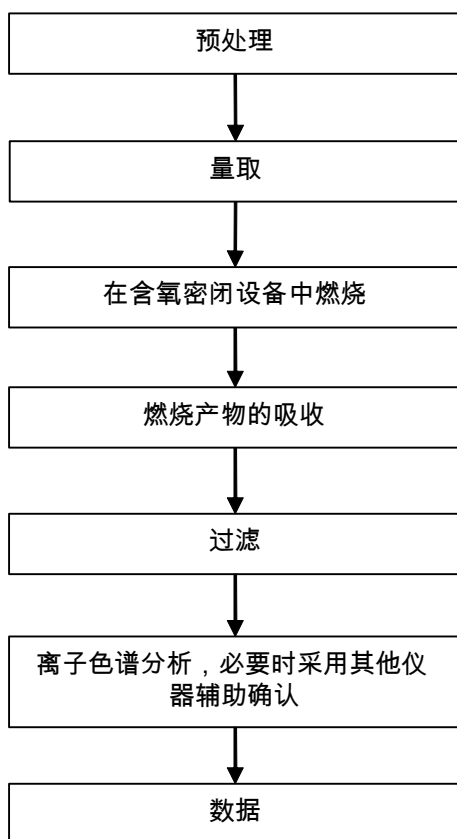


Unless otherwise agreed in writing, this document is issued by the Company subject to its General Conditions of Service printed overleaf, available on request or accessible at <http://www.sgs.com/en/Terms-and-Conditions.aspx> and, for electronic format documents, subject to Terms and Conditions for Electronic Documents at <http://www.sgs.com/en/Terms-and-Conditions/Terms-e-Documents.aspx>. Attention is drawn to the limitation of liability, indemnification and jurisdiction issues defined therein. Any holder of this document is advised that information contained hereon reflects the Company's findings at the time of its intervention only and within the limits of Client's instructions, if any. The Company's sole responsibility is to its Client and this document does not exonerate parties to a transaction from exercising all their rights and obligations under the transaction documents. This document cannot be reproduced except in full, without prior written approval of the Company. Any unauthorized alteration, forgery or falsification of the content or appearance of this document is unlawful and offenders may be prosecuted to the fullest extent of the law. Unless otherwise stated the results shown in this test report refer only to the sample(s) tested.

Attention: To check the authenticity of testing / inspection report & certificate, please contact us at telephone: (86-755) 8307 1443, or email: CN_Doccheck@sgs.com

附件

Halogen 测试流程图



样品照片:



此照片仅限于随SGS正本报告使用

*** 报告完 ***

